



# A Letter to Texas Students From The TSHF President

Dear Students and Faculty;

I hope this newsletter finds each of you enjoying a wonderful semester. I write bringing greetings and best wishes from the Texas Speech-Language-Hearing Foundation. As President of the Board, I look forward to the Texas Speech-Language-Hearing Association Convention in February, 2008 when we will gather in San Antonio to grow professionally, to re-connect with friends, and to enjoy the opportunity to meet new ones. An exciting part of the Convention is the Foundation luncheon. At this annual event, the awards of the Texas Speech-Language-Hearing Association will be awarded as will the scholarships and research grants from the Texas Speech-Language-Hearing Foundation. These awards will be presented to many deserving students who are studying for careers in the professions of speech-language pathology or audiology.

I hope each of you will take the time to visit the Foundation website (<http://www.tshfoundation.org>) and talk with your program director regarding scholarships and research grants for which you may be eligible to apply. Questions regarding the scholarships should be directed to Scholarship Chair, Dr. Mary Ann Acevedo ([acevm@lake.ollusa.edu](mailto:acevm@lake.ollusa.edu)). Questions regarding the research awards may be directed to Dr. Paul Hardee ([whardee@satx.rr.com](mailto:whardee@satx.rr.com)), Chair of the Research Awards Committee.

(continued on p.4)



## Success Stories

Within this edition of the TSHF Newsletter, you will meet the Texas students who were recipients of the many scholarships awarded by the Foundation. Check them out!!!

### Inside this issue:

Welcome Letter	1
Scholarship Winners	2
New Fund Announced	2
Group Picture of Winners	3
Deadlines	4

### Special points of interest:

- *President McCall greets students*
- *Winners are showcased*
- *Madeline Brand honored*
- *\$18,100 awarded at luncheon*
- *Advice for Texas students*

Plan to attend the Annual Awards Event at the 2008 TSHA Convention in San Antonio.

## 2007 Scholarship Recipients

### Donna Russell Fox Research Award



Leigh Ann Reel  
Texas Tech U

### Gardner Gateley Scholarship



Laurel Linton  
Baylor U

### Sara Haynes & HACD Scholarships



Brianne E. Foshea  
U of Houston

### Judith Keller Scholarship



Leah Maenius  
Texas Tech U

### Grace Middleton Scholarship



Rachel Wetterauer  
UT - El Paso

### Anne Mauzy Scholarship



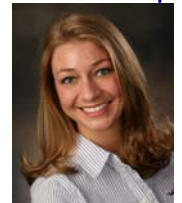
Anna Hinze  
UT-Austin

### Margaret Crabtree Scholarship



Shannon Randle  
U of Houston

### Elnita O. Stanley Scholarship



Kristin Pierce  
SFASU

### Sondra's Money, Tina Bangs & Lear Ashmore Research Awards



Jeffery Felderhoff  
Texas State U

### Presidents' Research Award



Jessica R. Sullivan  
UT-Dallas

### Sondra's Money, Empress Zedler & Lear Ashmore Research Awards



Ruth Fernandez  
OLLU

## TSHF Announces new fund!

TSHF is pleased to announce that the El Paso Speech Language Hearing Association has established a scholarship fund to honor Madeline Brand. The scholarship will be awarded to a student from UTEP or New Mexico State University. Interested students should contact their program director for more information.





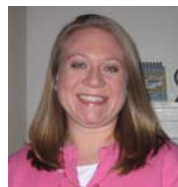
Students from programs across Texas were awarded \$18,100 in scholarship funds at the TSHF Annual Awards event in Houston. Photograph provided by TSHA member, Brad Smith, of The Woodlands.

**Lear Ashmore  
Research Award**



**Kara Ayala  
UT-Pan Am**

**Jon Ashby  
Scholarship**



**Chanan Adkins  
ACU**

**The Braniff  
Clipped B's  
Scholarship**



**Erin La Rue  
UT-Dallas**

**Jeanne  
Braniff-Terrell  
Scholarship**



**Lorisa Littlejohn  
UT-Dallas**

**Jeanne  
Braniff-Terrell  
Scholarship**



**Betty Susan George  
U of North Texas**

**San Antonio Speech-  
Language-Hearing  
Scholarship**



**Shara De La Garza  
OLLU**

**Sherry Sancibrian  
Scholarship**



**Marissa Hoelscher  
Texas Tech U**

**Elizabeth  
Carrow-Woolfolk  
Scholarship**

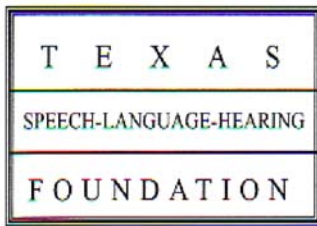


**Christine Cefaldo  
OLLU**

**Gilbert C. Hanke  
Scholarship**



**Veronica Macias  
SFASU**



**TEXAS SPEECH-LANGUAGE-HEARING  
FOUNDATION**

113 E. Sierra Circle  
San Marcos, Texas 78666  
512-245-2041  
cm06@txstate.edu

***TSHF College Newsletter***

**We're on the Web**  
**[www.tshfoundation.org](http://www.tshfoundation.org)**

A Letter from the TSHF President (from page 1)

---

Please take the time to look over these awards and apply for those that are available to you. It is our mission to provide as much support as possible to students in our professions. We love giving away money to deserving students like you!

Have a great semester and plan to join us in San Antonio for the Foundation Luncheon on February 22, 2008.

Sincerely,

Carolyn McCall  
TSHF Board President



---

**Deadlines:** Most scholarship applications are due in the late fall or early spring. Go to [www.tshfoundation.org](http://www.tshfoundation.org) for more information. All will be awarded in time for the Annual Awards Event at the Texas Speech-Language-Hearing Convention in February 2008.